

## MAG6419 Wireless Control IP Network Terminal



### *Features*

- Industrial design;
- High-quality and high-grade piano paint panel;
- Supports 100 / 1000Mbps self-adaption TCP / IP network transmission protocol;
- Can be accessed at any point within the LAN of the network PA system; the installation position is flexible and facilitated receiving wireless receiving signal and the control is more reliable and stable;
- Built-in wireless remote control receiving module, high sensitivity of receiving;
- Far transmission distance of wireless remote control , open space> 1.5 km;
- Wireless remote control integrated 12 keys, you can customize the corresponding function keys;
- Can control the region to play a specific source, the region to stop playing, select the zone to play a specific source, select the zone to stop and other operations.

## Description

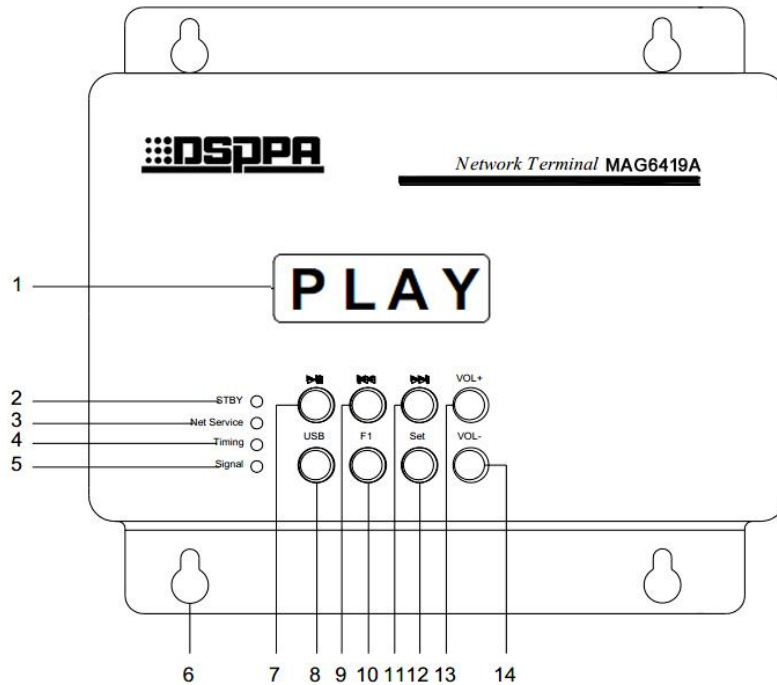
MAG6419 network wireless remote control terminal is consisted of MAG6419A network PA terminal and MAG6419B wireless remote control receiver module and wireless remote control. Applicable to our network intelligent PA system, it can realize wireless radio control within 1.5km in an open area (such as the school playground or large square).

Networked wireless remote control terminal set the function which has been pre-edited in the host to the 12 control buttons of the wireless remote control through MAG6419 device and receiving module, and then operate the wireless remote control to implement corresponding functional tasks when necessary. The wireless remote control can switch the function task and adjust the volume of the function task that is being executed in real time. It is operated flexibly and easy to use.

## Specification

MAG6419		Specfication
Digital interface		RS485
Cable		Stretch (remote control) / sucker antenna (receive box)
Working tempurature		-20°C~50°C
Environment humidity		≤90%
Power supply voltage	MAG6419A	AC220V-240V
	MAG6419B	DC16V-30V
Standby current		≤50mA
Maximu current		≤100mA
Receive module		Superheterodyne mode
Receive frequency		315MHz
Receive sensitivity		≤-114dBm (50Ω)
Controllable distance	With obstacles	<500m (Such as within urban buildings)
	Without obstacles	<1500m (Such as within playground and square)
Receive belt width		2MHz
Receive rate		<5Kbps (315MHz, -95dBm)
Package (L×W×H mm)	MAG6419A	330×270×125
	MAG6419B	215×205×80
Dimensions (L×W×H mm)	MAG6419A	222×195×49.5
	MAG6419B	86×86×45
Net weight		1.55kg

## *Front panel*



### **1. Digital screen and infrared remote control receiving window**

The digital screen shows the working and network information status of the machine. In the upper right corner of the screen is embedded infrared remote control receiving window, with it can control the state of the machine..

### **2. STBY**

Standby function indicator, equivalent to mute function, can be opened by network alarm and emergency signal. That is, the alarm and emergency signals can unmute.

### **3. Net Service**

This indicator is on when the unit is connected to the host via network.

### **4. Timing**

The terminal can execute a scheduled timing on the host when disconnected from it. This indicator lights when the terminal is able to disengage from the host and execute the timing point.

### **5. Signal**

This indicator lights when the terminal amplifier has a signal output. The indicator becomes bright gradually when the volume of the amplifier is gradually increased; the indicator becomes dark gradually when the volume is gradually reduced.

### **6. Screws fixing holes**

The terminal can be installed in a similar location such as the wall. There are 4 fixing screw holes on the machine, and the machine is fixed on the wall with the supplied screws.

### 7. Play/pause button

This button is used to play / pause operations when playing a local MP3 file; this button is used to save the result of the set-up operation when the address setting operation is performed.

### 8. USB button

U disk play / stop button; in the address setting operation, press the button to exit the setting state.

### 9. ◀◀ button

Play mode: Select the previous song play function.

Set the IP mode: move one screen left / left one, select the view / set parameters

### 10. F1 button

This button is used to adjust the volume, and can switch among three sources in the auxiliary input, microphone input, MP3 playback volume.

### 11. Set

Long press the button to enter the IP address view status, and then press once to enter the IP settings state.

### 12. ▶▶ button

Play mode: Select the previous song play function.

Set the IP mode: move one screen right / right one, select the view / set parameters

### 13. VOL+button

Playback mode: Volume increase function.

View IP Mode: Switch to select parameters.

Set the IP mode: parameter addition and subtraction function.

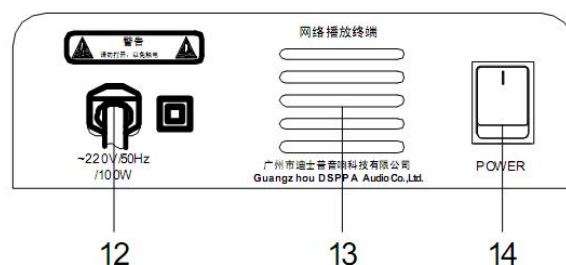
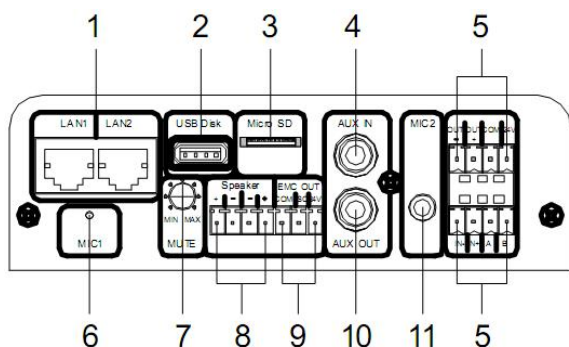
### 14. VOL-button

Playback mode: Volume decrease function.

View IP Mode: Switch to select parameters.

Set the IP mode: parameter addition and subtraction function.

## Side panel



**1. LAN 1/LAN 2**

The machine is a dual network interface design, connected to the network switch

**2. USB disk**

Insert a U disk or a memory device such as a mobile hard disk on which the MP3 program is connected, and provide the audio source to the built-in MP3 player.

**3. Micro SD**

Insert the SD card with the host timing at the jack, and play the audio source to the host when the terminal is offline.

**4. AUX in**

Connect audio source devices(such as DVD) to extend the audio source.

**5. Wireless receiving module interface**

Connect the wireless receiving module with an 8-pin cable, and refer to the connection instructions section of the MAG6419B.

**6. MIC1 pickup window**

Can be directly released voice broadcast through the built-in microphone pickup window.

**7. Microphone silence adjustment**

MIC1 silence depth adjustment knob.

**8. Speaker**

Built-in 2 x 25W digital amplifier, the output of the power is 25W and connect two fixed resistance (4Ω) speakers respectively. It can also be bridged into a single channel mode 50W, but it has to connect the 8Ω speaker.

**9. EMC override play output**

The output signal of this interface is controlled by host.

**10. AUX out**

Connect other amplifiers to extend the power of this terminal.

**11. MIC2 interface**

Connect the microphone to realize local paging or live speech and other functions.

**12. AC220V power line**

Supply power for the unit.

**13. Amplifier cooling window**

**14. POWER**

Press "I" to turn on the power and release "I" to turn off the power.