



MULTICHANNEL POWER AMPLIFIER  
**DA-1000F/DA-1250D**



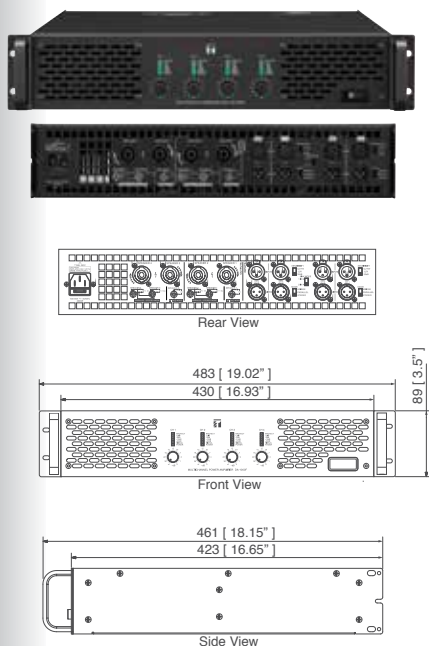
Dreaming of affordability, versatility and efficiency coming together? Not necessary anymore, we have bring it all to you. These TOA multichannel power amplifiers are excellent solution to sound application that requires high power density. With DA-1000F featuring 4000W, quadruple channels and DA-1250D with 2500W and dual channels, you can now handle the high power TOA HX-7 at ease.



**MULTICHANNEL POWER AMPLIFIER**

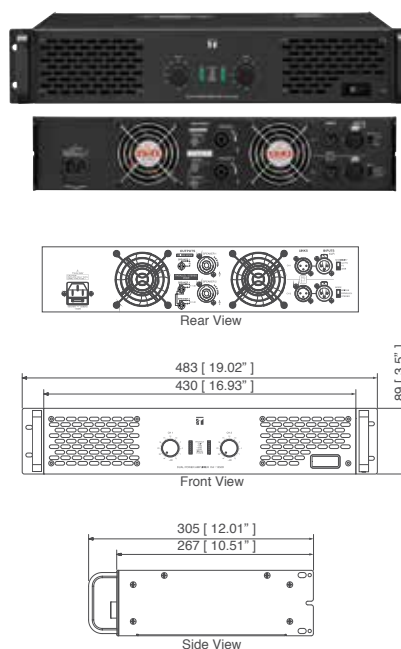
**DA-1000F**

- Four-channel digital power amplifier
- High power - total output of 4000W(4Ω) in a 2U cabinet
- Selectable connection cases - Bridge mode/Parallel mode/Stereo mode
- All channels bridgeable for 2- or 3-channel configurations

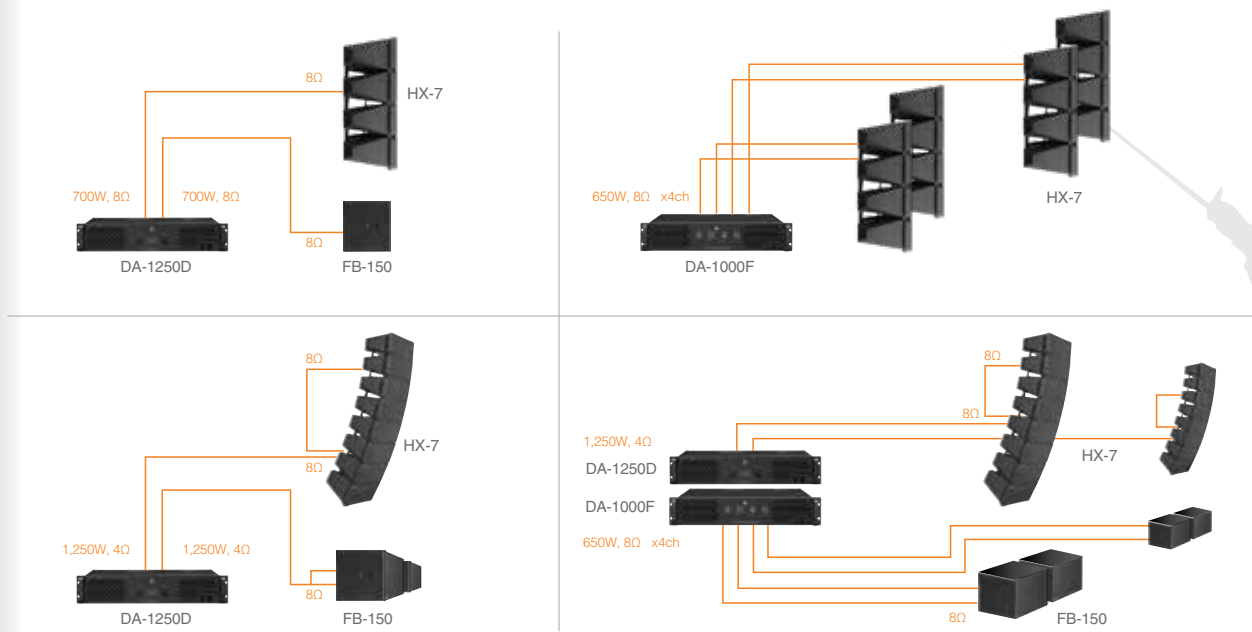


**DA-1250D**

- Dual channel digital power amplifier
- High power - total output of 2500W(4Ω) in a 2U cabinet
- Selectable connection cases - Bridge mode/Parallel mode/Stereo mode
- Bridgeable for 1-channel operation



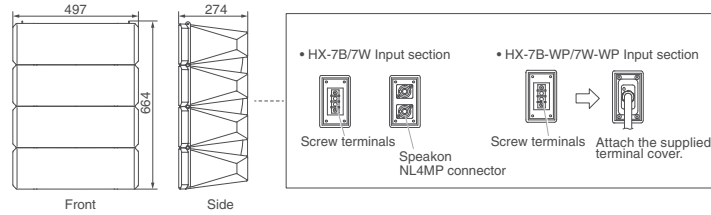
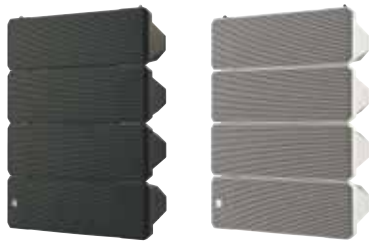
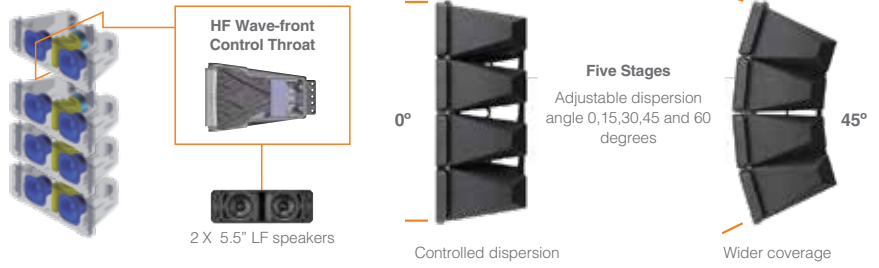
**SYSTEM EXAMPLE HX-7**



## VARIABLE DISPERSION ARRAY

### HX-7 Series

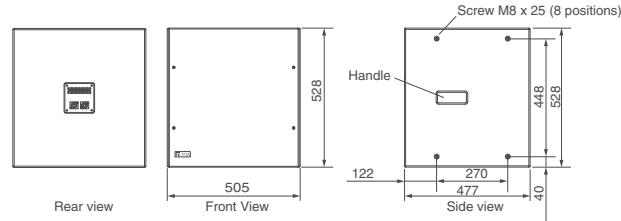
- Variable dispersion line array with SYNC-Drive wave guide technology
- Power handling: 750W Continuous Program@8 ohms
- Built-in isophasic wave-front control horn ensures precise HF control and superior reproduction of HF sounds
- Adjustable dispersion angle 0, 15, 30, 45 and 60° (60° requires optional HY-60D)
- Easily adjustable vertical dispersion angle
- Splash-proof version (IPX4) available



## SUBWOOFER

### FB-150

- Compact, indoor-use subwoofer system
- Power handling: 600W Continuous Program@8 ohms
- For floor-mount or hanging with the use of an optional HY-PF7B or HY-PF7W Speaker Rigging Frame
- Black or white selectable

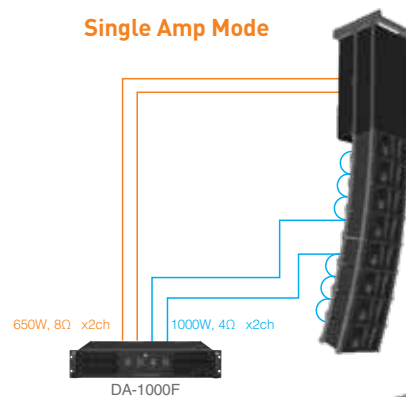
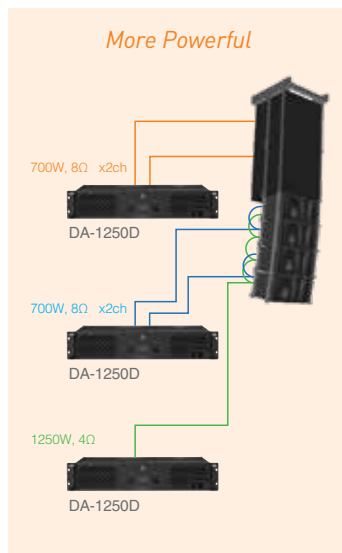
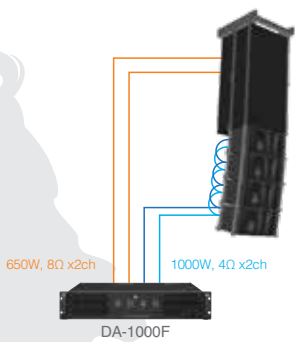


## TYPE C

### Bi Amp Mode

### More Powerful

### Single Amp Mode



## SPECIFICATIONS



	DA-1000F	DA-1250D
Power Source	100-240 V AC, 50/60 Hz	
Amplification System	Class D	
Power Consumption	2000 W* <sup>1</sup>	1100 W* <sup>1</sup>
Input	CH 1-4 : 20kΩ (balanced) / 10kΩ (unbalanced), 0.775 / 1.0V / 32dB* <sup>2</sup> , XLR-F connector	CH 1-2 : 20kΩ (balanced) / 10kΩ (unbalanced), 0.775 / 1.0V / 32dB* <sup>2</sup> , XLR-F connector
Output	LINK CH 1-4 : XLR-M connector SPEAKER 1-4 : 4 channels : 650Wx4 (8Ω)* <sup>3</sup> , 1000Wx4 (4Ω)* <sup>3</sup> 2 channels(BRIDGE) : 2000Wx2 (8Ω)* <sup>3</sup> NL4 SPEAKON connector	LINK CH 1-2 : XLR-M connector SPEAKER 1-2 : 2 channels : 700Wx2 (8Ω)* <sup>4</sup> , 1250Wx2 (4Ω)* <sup>3</sup> 1 channel(BRIDGE) : 2500Wx1 (8Ω)* <sup>3</sup> NL4 SPEAKON connector
Frequency Response	20Hz to 20kHz (+/-3dB)	20Hz to 20kHz (+/-3dB)
Total Harmonic Distortion	≤0.1%	≤0.15%
S/N ratio	≥100dB	
LED Indicator	Protect (red)/ Clip (red)/ -5dB(green) / -10dB(green) / -20dB(green) / Signal(green) / Power(green)	Protect (red)/ Clip (red)/ -5dB(green) / -10dB(green) / -20dB(green) / Signal(green) / Power(green)
Cooling	Air flow from front to rear	
Operating Temperature	0°C to +35°C (32°F to 95°F)	
Operating Humidity	80% RH or less (no condensation)	
Finish	Case : plated steel sheet, black	
Dimensions	483 (W) X 89 (H) X 461 (D) mm	483 (W) X 89 (H) X 305 (D) mm
Weight	9.2 kg	6.1 kg
Accessory	Power Cable ...1	

\*<sup>1</sup> 2/3 rated, 8Ω/CH

\*<sup>2</sup> 0dB = 1V

\*<sup>3</sup> The power is tested under the condition of 20ms burst 1kHz sin wave and 1% THD.

\*<sup>4</sup> The power is tested under the condition of 40ms burst 1kHz sin wave and 1% THD.

## APPLICATIONS



Houses of Worship



Halls/Theaters



Stadiums



Arenas



TOA Electronics Pte Ltd  
www.toa.com.sg

Specifications are subject to change without notice.  
Printed in Singapore [65] 865-0318-03