

SHOW[®] HORN SPEAKER

Thank you very much for choosing this **SHOW** product from among a broad variety of models. To obtain maximum effect and to use rightly the speaker, please follow the instructions carefully in this manual. Also, keep this manual anytime for your reference.

How to use

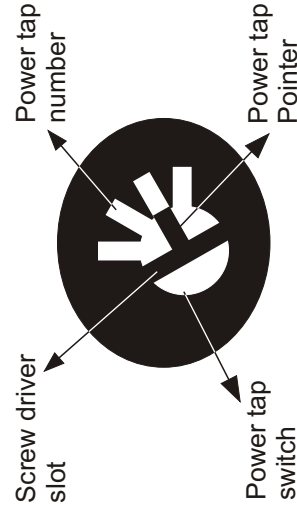
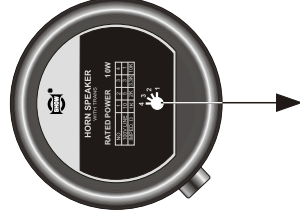
1. Careful attention should be required for the polarity when more than two speakers are in operation at the same place, otherwise the sound of poor quality and/or sound pressure of low level will be reproduced. Connection should be made in the same way as in the case of battery, same polarity with parallel connection and different polarity with series connection.
2. When long wiring is called for, the low impedance connection invites larger power loss, resulting in inefficient operation of speakers. In case wiring becomes longer than 50 meters, equip matching transformer and use with proper high impedance.
3. For low impedance connection, the total impedance of speakers should be equal to output impedance of amplifier.
4. Connect the speakers to be equal the total input power (wattages) to the output power of amplifier for high impedance connection. It means the impedance matching.

1

5. When setting the power tap switch, be certain to use the proper positions for either 25V or 70V systems, to prevent horn damage. (FOR TC-10B, 15B, 30B / SC-10B, 15B, 30B)

Chang Impedance

* See instructions on HORN LABEL



2

SHOW[®] HORN SPEAKER

Thank you very much for choosing this **SHOW** product from among a broad variety of models. To obtain maximum effect and to use rightly the speaker, please follow the instructions carefully in this manual. Also, keep this manual anytime for your reference.

How to use

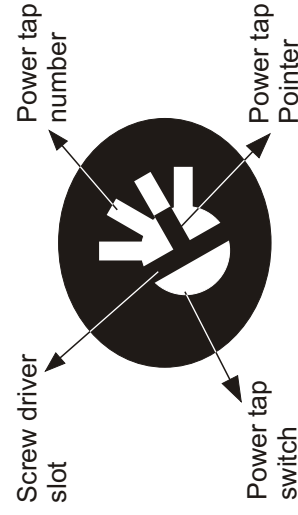
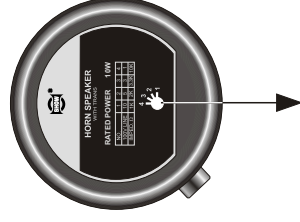
1. Careful attention should be required for the polarity when more than two speakers are in operation at the same place, otherwise the sound of poor quality and/or sound pressure of low level will be reproduced. Connection should be made in the same way as in the case of battery, same polarity with parallel connection and different polarity with series connection.
2. When long wiring is called for, the low impedance connection invites larger power loss, resulting in inefficient operation of speakers. In case wiring becomes longer than 50 meters, equip matching transformer and use with proper high impedance.
3. For low impedance connection, the total impedance of speakers should be equal to output impedance of amplifier.
4. Connect the speakers to be equal the total input power (wattages) to the output power of amplifier for high impedance connection. It means the impedance matching.

1

5. When setting the power tap switch, be certain to use the proper positions for either 25V or 70V systems, to prevent horn damage. (FOR TC-10B, 15B, 30B / SC-10B, 15B, 30B)

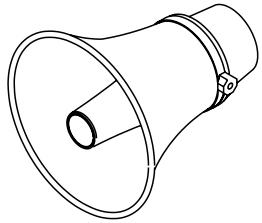
Chang Impedance

* See instructions on HORN LABEL

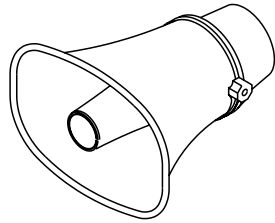


2

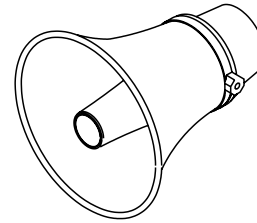
TC-SYSTEM



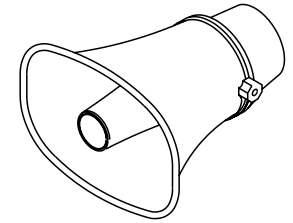
SC-SYSTEM



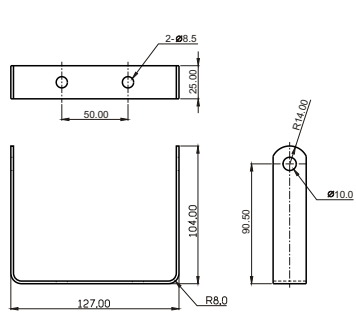
TC-SYSTEM



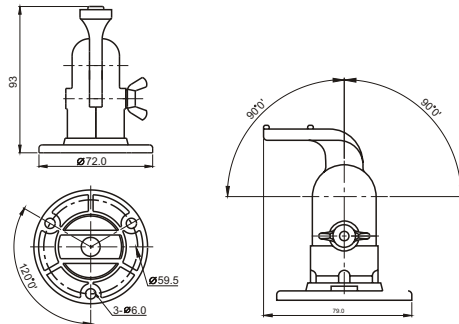
SC-SYSTEM



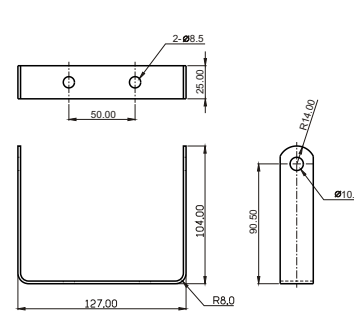
H-Mouting Bracket



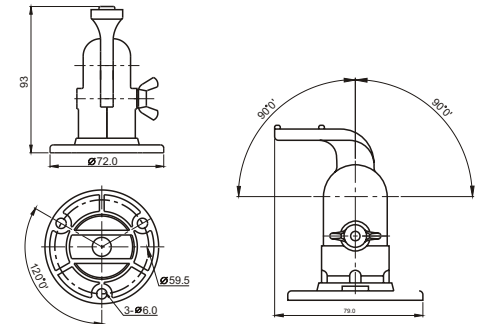
Y-Swivel Bracket



H-Mouting Bracket



Y-Swivel Bracket



Specifications

MODEL	TC SC -10A	TC SC -10B	TC SC -15A	TC SC -15B	TC SC -30A	TC SC -30B
Rated Input Power	10 W (100V Line)	10 W (70V,25V Line)	15 W (100V Line)	15 W (70V,25V Line)	30 W (100V Line)	30 W (70V,25V Line)
Input Impedance	1K 2K 3.3K 10K	63 V Line only 130 V Line only 500 1K 1.7K 2.9K	670 K 2K 3.3K 10K	42 (25V Line only) 63 (25V Line only) 170 (25V Line only) 330 500 1K 1.3K 2.3K	330 670 1K 2K 3.3K 10K	21 (25V Line only) 42 (25V Line only) 63 (25V Line only) 170 330 500 1K 1.3K 2.3K
Preset Impedance	1K	500	670	330	330	170
Frequency response	315~12.500HZ	315~12.500HZ	280~12.500HZ	280~12.500HZ	250~16.000HZ	250~16.000HZ
Sound Pressure level	105dB/W/m	105dB/W/m	108dB/W/m	108dB/W/m	109dB/W/m	109dB/W/m
Dimensions	TC-10A SC-10A	TC-10B SC-10B	TC-15A SC-15A	TC-15B SC-15B	TC-30A SC-30A	TC-30B SC-30B
Horn Flare :	Aluminum ø161.5 mm	ABS resin 176mm× 125.5mm	Aluminum ø161.5 mm	ABS resin 176mm× 125.5mm	Aluminum ø212.5 mm	ABS resin 222mm× 161.5mm
Length :	186.5 mm	179.5 mm	186.5 mm	179.5 mm	229.5 mm	227.5 mm

Specifications

MODEL	TC SC -10A	TC SC -10B	TC SC -15A	TC SC -15B	TC SC -30A	TC SC -30B
Rated Input Power	10 W (100V Line)	10 W (70V,25V Line)	15 W (100V Line)	15 W (70V,25V Line)	30 W (100V Line)	30 W (70V,25V Line)
Input Impedance	1K 2K 3.3K 10K	63 V Line only 130 V Line only 500 1K 1.7K 2.9K	670 K 2K 3.3K 10K	42 (25V Line only) 63 (25V Line only) 170 (25V Line only) 330 500 1K 1.3K 2.3K	330 670 1K 2K 3.3K 10K	21 (25V Line only) 42 (25V Line only) 63 (25V Line only) 170 330 500 1K 1.3K 2.3K
Preset Impedance	1K	500	670	330	330	170
Frequency response	315~12.500HZ	315~12.500HZ	280~12.500HZ	280~12.500HZ	250~16.000HZ	250~16.000HZ
Sound Pressure level	105dB/W/m	105dB/W/m	108dB/W/m	108dB/W/m	109dB/W/m	109dB/W/m
Dimensions	TC-10A SC-10A	TC-10B SC-10B	TC-15A SC-15A	TC-15B SC-15B	TC-30A SC-30A	TC-30B SC-30B
Horn Flare :	Aluminum ø161.5 mm	ABS resin 176mm× 125.5mm	Aluminum ø161.5 mm	ABS resin 176mm× 125.5mm	Aluminum ø212.5 mm	ABS resin 222mm× 161.5mm
Length :	186.5 mm	179.5 mm	186.5 mm	179.5 mm	229.5 mm	227.5 mm